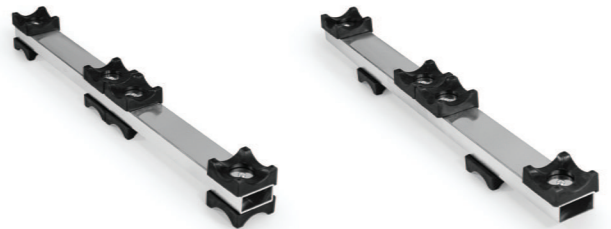


Roll your truss



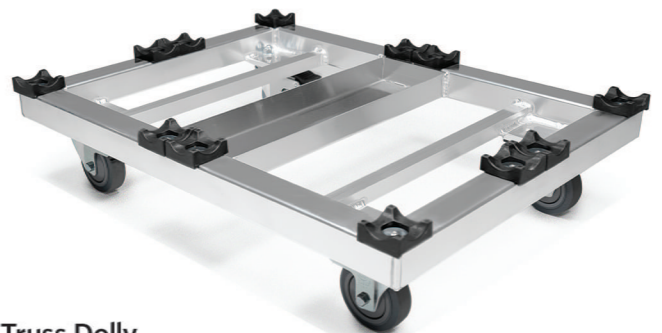
The new Truss Dolly and Insert from Milos make moving your truss from the truck to the installation area, and back again, easy and convenient.

The innovative, universal design and placement of the durable rubber holders on the Truss Dolly allow it to hold M290 and M390 Quatro and Trio truss. Constructed from aluminum, the dolly features channels for attaching ratchet straps. Due to the dolly's 31-1/2" x 23-5/8" dimensions, it fits in most trucks. When not in use, the empty dollies stack on top of each other to save space.



Truss Insert

- Strong and durable rubber holders
- Four different versions available for M290 Quatro truss, M390 Quatro truss, M290 Trio truss and M390 Trio truss
- Rubber holders are mounted on an aluminum profile



Truss Dolly

- Stacking capacity up to 6 levels of truss
- Grooves for securing ratchet straps
- Dimensions: 31-1/2" x 23-5/8"
- 2 regular wheels and 2 wheels with brakes (each wheel has a 220 pounds loading capacity)
- Made from aluminum
- Custom size dollies available on request