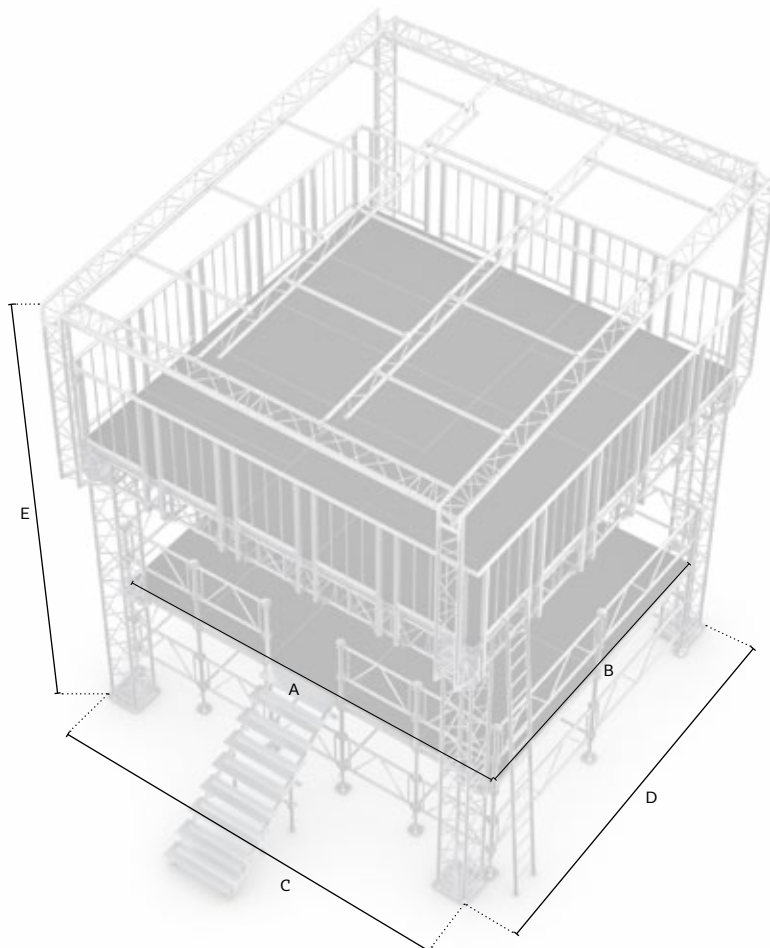


FOH Front of House

- Double decker front of house structure for temporary events
- Two tier structure with integrated platform ideal for sound station
- Heavy-duty M390 Quatro main structure and with support beams
- Fast connection for quick, simple and secure assembly
- Structure supplied complete with PVC covers

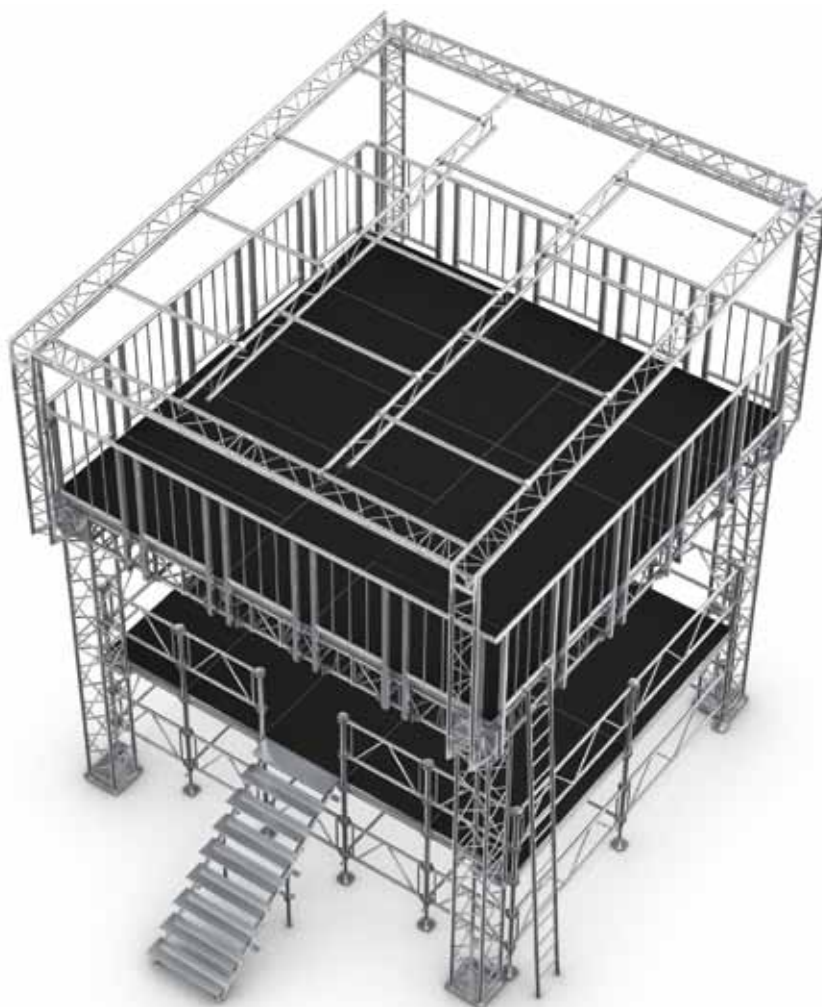


Technical specifications

		Stage size >	5x5 m	(16.40x16.40 ft)
Dimensions	A	Internal width	5.00 m	(16.40 ft)
	B	Internal depth	4.00 m	(13.12 ft)
	C	External width	5.00 m	(16.40 ft)
	D	External depth	5.00 m	(16.40 ft)
	E	Height back	6.18 m	(20.27 ft)
	F	Height front	6.57 m	(21.56 ft)
	G	Cantilever depth	3.17 m	(10.40 ft)
	H	Overall external width - TOP	21.30 m	(69.88 ft)
	I	Overall external height - TOP	11.84 m	(38.85 ft)

Loading capacity

		Stage size >	5x5 m	(16.40x16.40 ft)
Loading capacity		Top level	200 kg/m ²	(4746.07 lbs)
		Bottom level	750 kg/m ²	(17797.77 lbs)
* See structural report for exact load positioning				



Operational Specifications

Design standards	DIN 1055-4 Loading on structures DIN 4112 Temporary structures DIN 4113 Aluminium structures • All of our structures are produced under EN 1090 EXC2 as standard and include the necessary guy wires, instruction manual and engineering report
Wind management	In service 17.8m/s - 64km/h - 40mph (max. gust wind speed) Out of service 27.5m/s - 100km/h - 62mph (max. gust wind speed)
Ballast	This can vary per column from 250kg / 550 lbs up to 1500 kg / 3304 lbs and depends on: • Layout of canopies • Self-weight of load or interconnected stage is considered (Might be deducted from ballast under certain conditions) • Friction material used between screw jacks, padding and sub soil
Canopy & sidewalls	B1 fire-retardant canopy on request, single piece format Silvergrey, other colors or inside black on request B1 fire-retardant side nets in compliance with latest Eurocodes
Customized	Customisation (i.e. truss configuration, alternative dimensions) upon request

Transportation data

	Stage size >	5x5	(19.7 x 19.7')
Self-weight	* Exact self-weight depends on configuration	2594 kg	(5714 lbs)
Transport volume	* Packed in carton boxes and bubble foil	20 m³	(176 ft³)