

# Milos

# Meat Rack

PRODUCT NAME:  
MEAT RACK

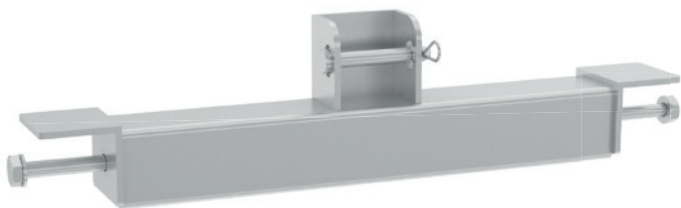
The new Meat Rack from MILOS gives you a convenient transport and storage solution for lights, using adjustable light bars and hanging adapter for oversize lights, or just about anything else with its height adjustable shelves.



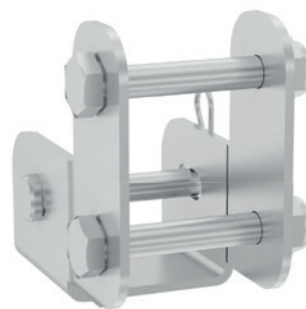
- All welded construction for high strength and long-term durability
- Made from high-quality 6082 aluminium
- Fork lift pick-up points for convenient stacking
- Height adjustable handle on each rack end for easy handling
- Castor wheels as standard
- Light bars, oversize light adapter or shelves on request
- 2.3 m x 0.8 m x 1.6 m (L x W x H) dimensions optimize transport space

# Milos Meat Rack

PRODUCT NAME:  
MEAT RACK



Oversize Light Adaptor



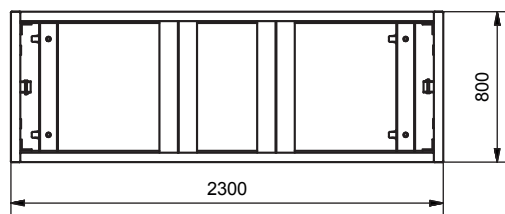
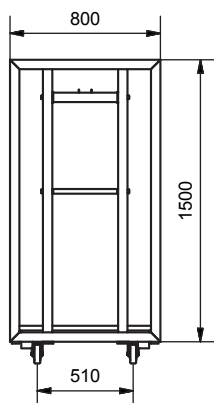
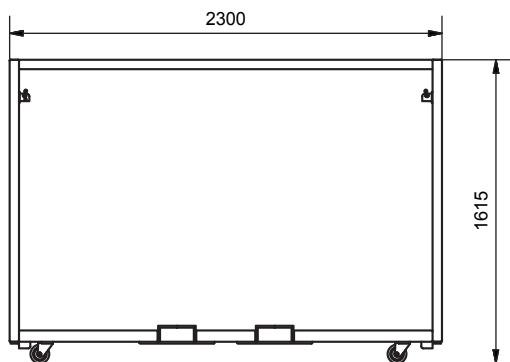
Light Bar Fitting



Shelf



Light Bar -d48



## Technical specifications:

Top horizontals	Profile 50 × 50 × 3
Verticals	Profile 50 × 50 × 3
Bottom horizontals	Profile 60 × 60 × 5
Forklift pockets	520 width
Castor	Ø100 mm
Weight	64 kg